

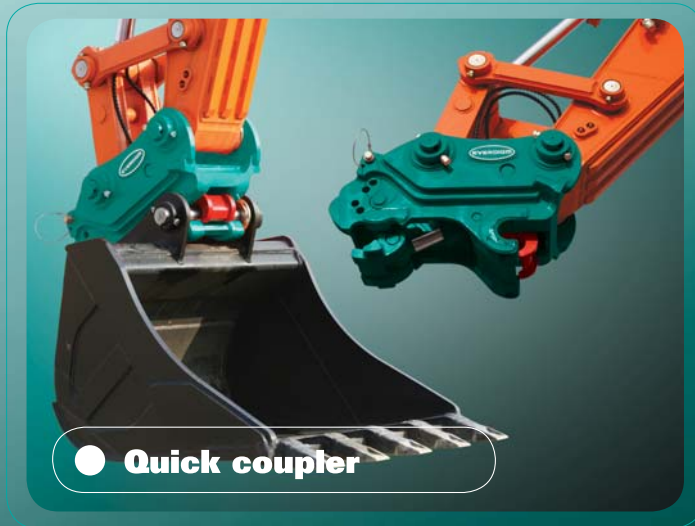
EVERDIGM Attachment

Quick Coupler



Tools that make people move

Quick coupler Series
Turning your job into more value!



● Quick coupler

Safety

- More advanced safety which is enabled by triple safety devices
- Auto safety locking cylinder (EOX-05 and above lager model)
- Main cylinder with built-in safety check valve
- Manual safety pin

Convenience

EOX series provide the best convenience with Full Automatic safety locking cylinder which is connected with quick coupler Lock / Release operation.

Quality

High strength with wear resistance material and high pressured cylinder provides excellent durability

Compatibility

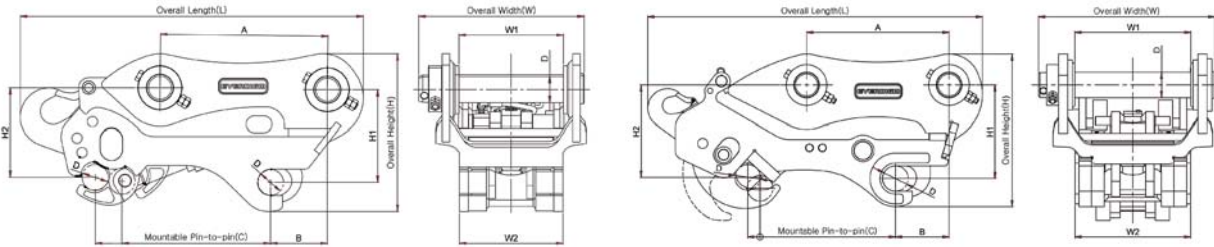
Wide pin mount range by 4 pin grabber structure provide all attachment installation without any modification on mounting area.

Aesthetics

Slick & stylish design to harmonize with all excavators & attachments

Optimization

Light weight, low profile, fast operating – 10 years know-how and latest 3D Computer Aided Design & Engineering gives the right coupler you've waited for



Specification	Unit	EOX05						EOX08		EOX14				EOX14P ^①				
		D1	H1	L1	U1	V0	V1	VC1	V1	D1	H1	V1	VC1	D1	H1	V1	VC1	
Overall Length(L)	mm	661		636			661		709	877	867	877		952		947		
Overall Height(H)	mm	331	317	321		312	317		367	410		418		423		420		
Overall Width(W)	mm	286		280			286		307	418		441		441		441		
Weight *	kg	76		71	69	72	78		106	186	180	192		220	342	211		
Mounting Width(W1)	mm	156	165	150	145	160	159		171	261	260	275		261	331	275		
Mounting Width(W2)	mm	155	164	150	144	158			169	259	258	247		259	330	274		
Pin-to-pin(A)	mm	260	285	230			285		300	400		390		405		385		
Offset Distance(B)	mm	145		150			145		130	133		150		150		150		
Mountable Pin-to-pin(C)	mm	256-303	257-303	217-293			257-303		282-355	356-424		378-415		378-415		378-415		
Pin Diameter(D)	mm	45						60		65		65		65		65		
Offset Height(H1)	mm	185	175	179		195		175	225	254		250		250		250		
Offset Height(H2)	mm	202	187						247-253		247-253		255		255		255	
Operation Pressure	bar	30-280						30-280		30-350		30-350		30-350		30-350		
Oil Flow	lpm	10-20						10-20		10-20		10-20		10-20		10-20		
Applicable Excavator		Doosan S55-VG S55-VGP S55W-V S55W-VG S55W-VGP DX55	Hyundai R55-7	Kobelco SK55SR-3	Kubota U-50	Volvo ECR58C	Volvo EC55B EW55B ECR58	Volvo EC55C EW60C	Volvo ECR88	Doosan DX140W DX140LC	Hyundai R140LC-7 R140W-7	Volvo MX135WS EC140B EW130 EW145BP	Volvo EC140C	Doosan DX140W DX140LC	Hyundai R140LC-7 R140W-7	Volvo EW145B	Volvo EC210C	

Specification	Unit	EOX22				EOX22P ^①		EOX24		EOX30				EOX30P ^①			EOX33P ^①			EOX45P ^①				
		D1	H1	VC1	VC2	VC1	VC2	VC1	VC2	D1	H1	VC1	VC2	D1	H1	VC1	D1	H1	VC1	D1	H1	VC1		
Overall Length(L)	mm	1,066				1,100		1,161	1,160	1,161		1,205			1,198	1,288	1,291	1,314	1,400		1,316			
Overall Height(H)	mm	522				520		575	586	575		545			540	595	608	612	656	650	614	614		
Overall Width(W)	mm	504				531		606	618		634			625			649			666	721	679	706	
Weight *	kg	348	342	348		370	526	534		562	542			532	659	662	697	901	872	735	735			
Mounting Width(W1)	mm	333	331	326		326	381	395	400	411	395			400	411	410	432	441	472	432	470	470		
Mounting Width(W2)	mm	332	330	325		325	380	394	398	410	394	398	410	394	398	410	408	430	440	470	430	468	468	
Pin-to-pin(A)	mm	471				470		515	515		515			505	575	590	600		570		570			
Offset Distance(B)	mm	178				166		190	190		175			190	185	210	205	205	185	185		185		
Mountable Pin-to-pin(C)	mm	443-513				453-488		488-603	488-603		488-603			505-535	490-523	545-585		567-597		545-585		545-585		
Pin Diameter(D)	mm	80				80		90	90		90			100	100,110	120		100,110		100,110		100,110		
Offset Height(H1)	mm	285				310		350	350		330			353	370	390		364		364		364		
Offset Height(H2)	mm	310-315				283		353-365	353-365		325			357	353	386		386		386		386		
Operation Pressure	bar	30-350				30-350		30-350	30-350		30-350			30-350			30-350			30-350		30-350		
Oil Flow	lpm	10-20				10-20		10-20	10-20		10-20			10-20			10-20			10-20		10-20		
Applicable Excavator		Doosan S180W-V S225LCV S210W-V S210W-V DX210W DX220LC	Hyundai R200W-7	Volvo EC210BP	Volvo EC210C	Volvo EC210B	Volvo EC210C	Volvo EC240C	Doosan S290LC-V S300LCV DX300LC	Hyundai R290LC-7	Volvo EC290BP	Volvo EC290C	Doosan S290LC-V S300LCV DX300LC	Hyundai R290LC-7	Volvo EC290BP	Doosan DX380LC S330LCV	Hyundai R360LC-V	Volvo EC360C	Doosan DX480LC	Hyundai R520LC	Volvo EC460C			

* Note : ① "P" means "Pull type", and without "P" means "Push type"

Head Office & Factory

332-3, Janggwan-ri, Jincheon-eub, Chungcheongbuk-do, Korea
Tel_+82-43-530-3300 Fax_+82-43-530-3429

Sales & Marketing

Room #1203, Woolim Lion's Valley 2, 680, Gasan-Dong, Geumcheon-Gu, Seoul, Korea
Tel_+82-2-801-0800 Fax_+82-2-801-0899



©EVERDIGM Corp. Printed in Korea