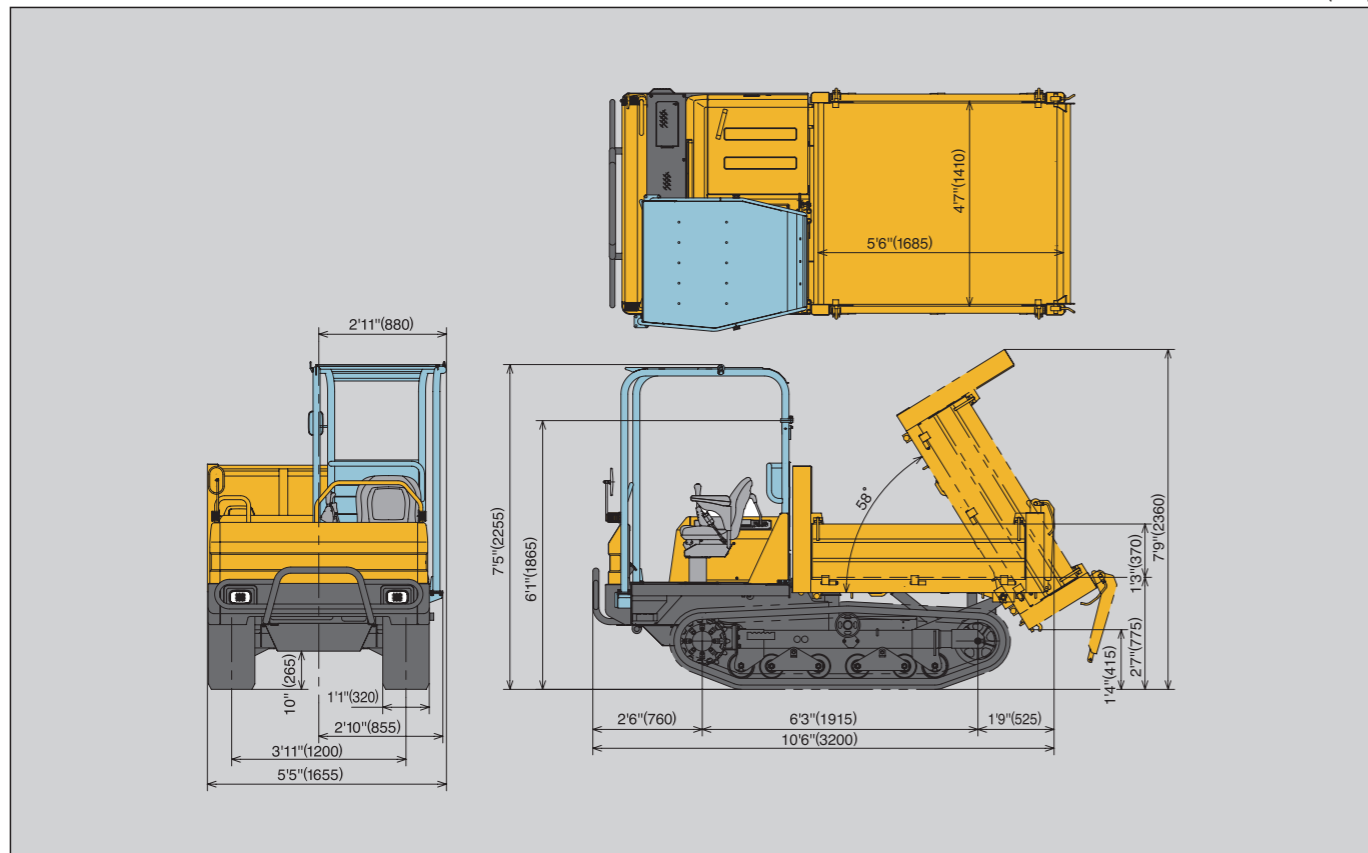


unit:ft-in (mm)



YANMAR

ALL TERRAIN CARRIER

C30Rus

25.4kW



Specifications

| Model | | C30Rus | | |
|--------------------|-------------------------|---|---|--|
| Dump Vessel Type | | One-way dump type | | |
| Shape of Vessel | | Box-shape | | |
| Operating Weight | | 5215 (2365) | | |
| Engine | Type | Direct injection combustion Water-cooled 3 cyl. Diesel | | |
| | Model | 3TNV88-BDFW | | |
| | Output | 34.1/25.4 (3000) | | |
| Transmission | | Two speed automatic hydrostatic transmission and Reduction gear | | |
| Under Carriage | Track type | | Steel-reinforced rubber track | |
| | Track width | | 1' (320) | |
| | Min. ground clearance | | 10" (265) | |
| | Ground contact pressure | Unloaded | 3.9 (26.9) | |
| Loaded | | 8.1 (55.4) | | |
| Brake | Service brake | Type | Mechanical wet multipul disk | |
| | | Operation | Pedal, mechanical | |
| | Parking brake | Type | Common with service brake | |
| | | Operation | Lever, mechanical | |
| Performance | Max. payload | | 5510 (2500) | |
| | Max. dumping angle | | 58 | |
| | Dump clearance | | 1'4" (415) | |
| | Dump body capacity | Struck | 1.15 (0.88) | |
| | | Heaped | 1.62 (1.24) | |
| | Travel speed | Forward | Low speed 0-2.5 (0-4.0) / High speed 0-6.8 (0-11.0) | |
| | | Reverse | Low speed 0-2.5 (0-4.0) / High speed 0-6.8 (0-11.0) | |
| Traction force | | 5510 (24.5) | | |
| Hydraulic System | Pump (for dump) | | Gear | |
| | Control valve | | Single spool, mechanical control | |
| | Pump displacement | | 0.40 (6.5) | |
| | Relief valve pressure | | 2490 (17.2) | |
| Fuel tank capacity | | 10.6 (40) | | |

YANMAR CONSTRUCTION EQUIPMENT CO.,LTD.

OVERSEAS SALES DEPT.
 MARKETING & SALES DEPT.
 1717-1, Kumano, Chikugo, Fukuoka 833-0055, Japan
 Tel : +81-942-53-5465 Fax : +81-942-53-5132
<http://yanmar.com>

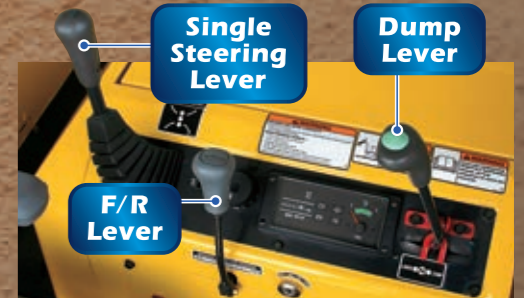
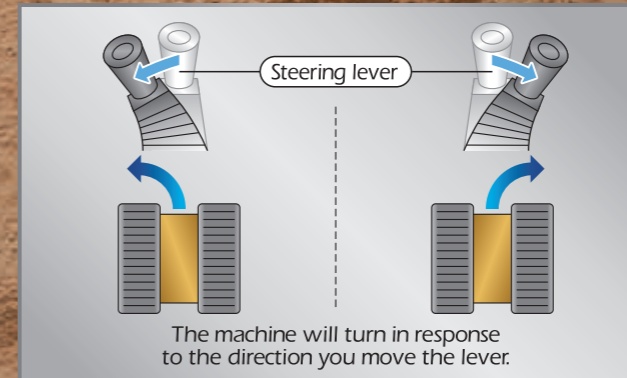
All data subject to change without notice.

The Carrier for Professionals

Simple, Efficient Operation and the Ruggedness for Every Terrain



Single Handed Operation



The single steering lever is extremely easy to operate with one hand. The easy controls give the operator hours of low-fatigue operation.

The Ruggedness for Large Capacity Loads 5,500lbs (2,500kg)

The loading vessel bottom plate is 0.24 inch thick, and the structure rugged and strong.



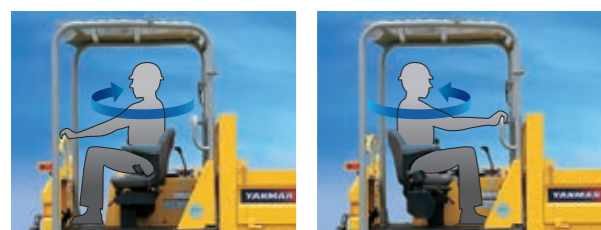
Efficient Dumping

The dumping angle and clearance are big for efficient dumping.



Turnable Reverse Operator's Seat

Turn the seat around with a single lever operation, without even getting out of your seat. The operator can always face forward regardless of the direction of travel. That's a convenient feature on restricted worksites.



Variable Speed HST

Just step on the pedal to change speed like when using the automatic transmission of a passenger car. Acceleration and deceleration are smooth.



Walk-through Operator Seat

Get in and out from either side — a big plus when space is tight.

Rubber Track

The durable rubber tracks are gentle to asphalt but have plenty of traction on soft ground.



Front Bumper

The front bumper protects the machine from damage during work.



Four-pillar ROPS/FOPS Canopy Retractable Seat Belt

The ROPS (Rollover Protective Structure) and FOPS (Falling Object Protective Structure) canopy complies with safety standards.



Easy Engine Maintenance

The hood opens fully for easy engine maintenance. The engine complies with the EPA's emissions regulation.

